



your future
is yours
to define



**Thomas Jefferson
University**

HOME OF SIDNEY KIMMEL MEDICAL COLLEGE



academic majors

Explore our programs in architecture, business, design, engineering, fashion and textiles, health, medicine, nursing, science and social science to consider which path is the right one for you.

- Accounting (BS)
- Animation & Digital Media (BS)
- Architectural Studies (BS)
- Architecture (BArch)
- Biochemistry (BS)
- Biology (BS)
- Biopsychology (BS)
- Chemistry (BS)
- Communication & Media Studies (BS)
- Construction Management (BS)
- Engineering (BSE)
- Exercise Science (BS)
- Fashion Design (BS)
- Fashion Merchandising & Management (BS)
- Finance (BS)
- Health Sciences (BS)
- Health Sciences, BS/Physician Assistant Studies, MS Dual Degree (4+2)*
- Health Sciences: Pre-Medical Imaging & Radiation Sciences (BS)
- Health Sciences: Pre-Medical Laboratory Sciences & Biotechnology (BS)
- Health Sciences: Pre-Nursing (BS)*
- Health Sciences: Pre-Pharmacy (BS)*
- Health Sciences: Pre-Physician Assistant (BS)*
- Health Sciences: Pre-Respiratory Therapy (BS)
- Industrial Design (BS)
- Interdisciplinary Studies (BS)
- Interior Design (BS)
- International Business (BS)
- Landscape Architecture (BLA)
- Law & Society (BS)
- Management (BS)
- Marketing (BS)
- Mechanical Engineering (BSE)
- Medical Imaging & Radiation Sciences (BS)**
 - Cardiac Sonography
 - Computer Tomography (CT)
 - General Sonography
 - Invasive Cardiovascular Technology (ICVT)
 - Magnetic Resonance Imaging (MRI)
 - Medical Dosimetry
 - Radiation Therapy
 - Radiography (X-Ray)
 - Vascular Sonography
- Medical Laboratory Sciences (BS)**
 - Biotechnology
 - Cytotechnology & Cell Sciences
 - Medical Laboratory Science
 - MLT To MLS
- Nursing, Full-Time Accelerated Coursework Track (FACT) – 1 Year BSN**
- Nursing, Full-Time Accelerated Coursework Track (FACT) – 2 Year BSN**
- Nursing, Traditional (BSN)**
- Occupational Therapy Assistant (AS)
- Postbaccalaureate Pre-Professional Program (P4) 1 & 2 Year Options
- Pre-Medical Studies (BS)
- Professional & Strategic Writing (BS)
- Psychology (BS)
- Respiratory Therapy (BS)
- Textile Design (BS)
- Textile Product Science (BS)
- Visual Communication Design (BS)
- Undeclared

CAMPUS LOCATIONS KEY

- East Falls
- Center City
- Center City/Dixon



ACCELERATED PROGRAMS

- Architectural Studies, BS/Architecture, MArch (4+2)
- Architectural Studies, BS/Historic Preservation, MS (4+1)
- Architectural Studies, BS/Real Estate Development, MS (4+1)
- Exercise Science, BS/Athletic Training, MS (3+2)*
- Exercise Science, BS/Occupational Therapy, OTD (3+3)*
- Exercise Science, BS/Physical Therapy, DPT (3+3)*
- Health Sciences, BS/Athletic Training, MS (3+2)
- Health Sciences, BS/Community & Trauma Counseling, MS (3+2)
- Health Sciences, BS/Medical Laboratory Sciences & Biotechnology, MS (3+2)
- Health Sciences, BS/Nutrition & Dietetic Practice, MS (3+2)
- Health Sciences, BS/Occupational Therapy, OTD (3+3)*
- Landscape Architecture, BLA/Sustainable Design, MS (4+1)
- Psychology, BS/Community & Trauma Counseling, MS (3+2)
- Psychology, BS/Occupational Therapy, OTD (3+3)*

*This program is only available to students entering Jefferson from high school/secondary school.

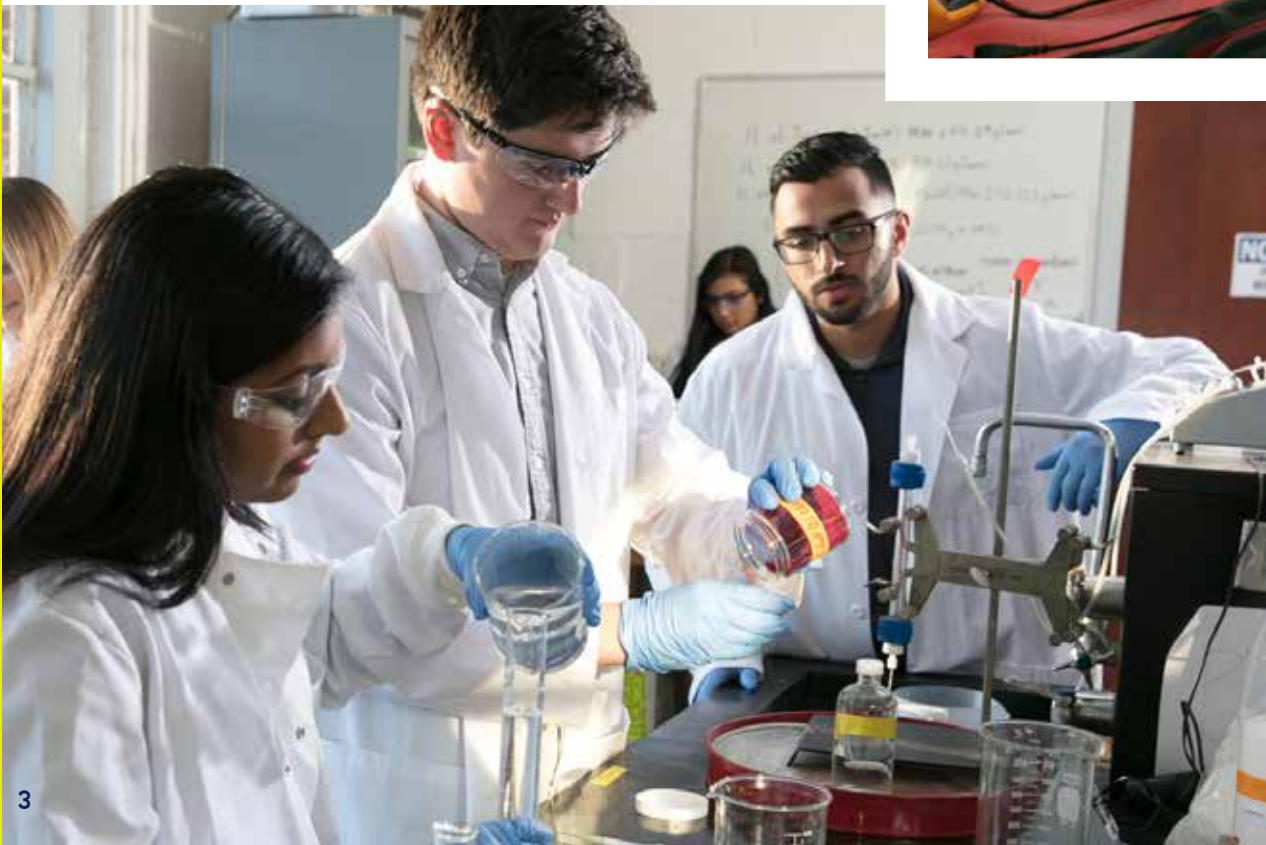
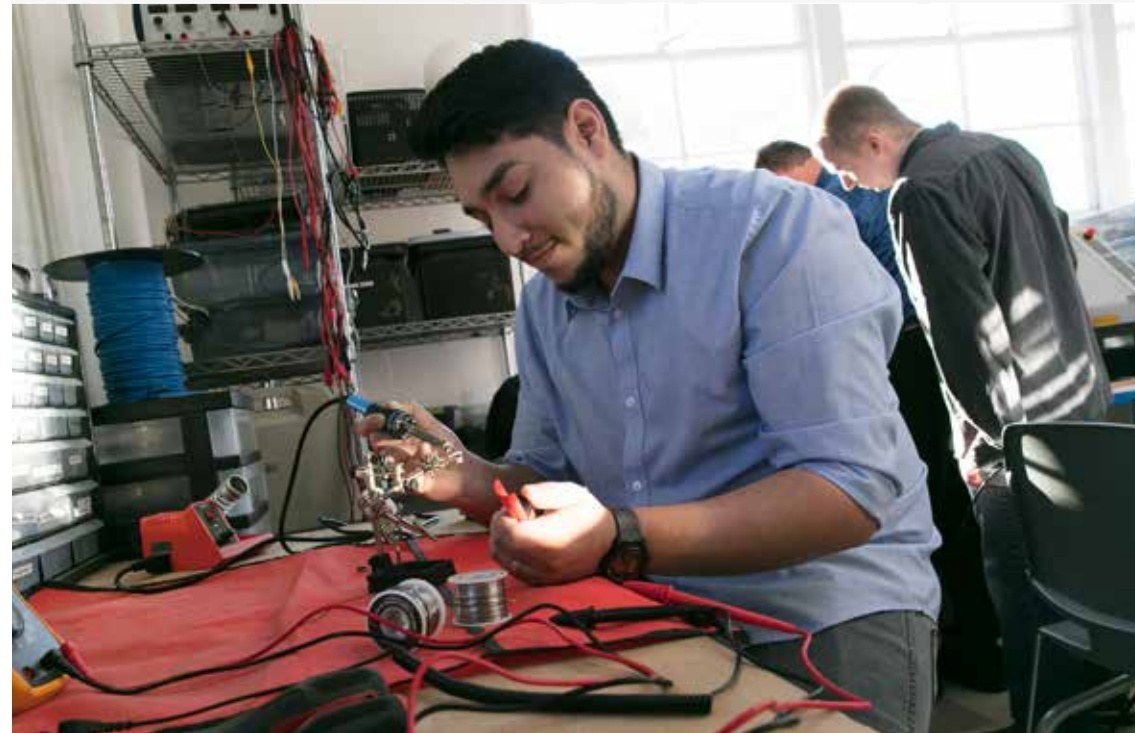
**This program is only available to students entering Jefferson from another College/University.

An education that is active, collaborative, real-world and infused with the liberal arts.

nexus learning™

No matter what you study at Jefferson, Nexus Learning™ is how you'll study it.

It fuses design thinking with hands-on execution. You will practice transdisciplinary collaboration with students across majors to solve problems for companies like Verizon or NASA. You can help respond to national crises using cutting-edge equipment, mastering the art of intellectual risk-taking. All of this is Nexus Learning™. And that's what will give you the tools, connections and confidence to reach your full potential.



ACTIVE

Forget the watch-and-learn model and get up and do it.

REAL-WORLD

At Jefferson, the best stories are true stories. Our students learn and work across the globe.

COLLABORATIVE

Work together with students from different programs – and different perspectives – to solve industry challenges.

LIBERAL ARTS

The Hallmarks Program is how we do the liberal arts, giving you the power to customize your general education curriculum to best fit your interests and professional goals.



For us, excellence is both the honor we've earned and our promise to you.

Our academic programs are internationally recognized. We have one of the top fashion design programs in the world, award-winning architecture students and our roots in medicine, health and science education date back to 1824. Our tradition of excellence is reflected in the faculty who give you the benefit of their experiences as industry leaders and educators.

From Day One, you'll be treated as a professional in your field, with opportunities to collaborate across programs of study on real-world industry projects, alongside your peers from all over the University. No matter what you pursue as your major, you'll study curiosity, creativity and innovation as you create what's next. You'll know the course, set the pace and be miles ahead of the competition. **The proof: our 96% job success and graduate school acceptance rate.**

Start with excellence.

Then go beyond.



ARCHITECTURE

Reimagine how buildings, neighborhoods and cities are designed. Focus on developing a more sustainable world.



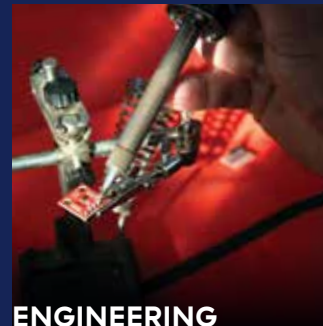
BUSINESS

Help small businesses plan for the future. Manage the finances of a Fortune 500 company. And close the deals that will open a future of possibility.



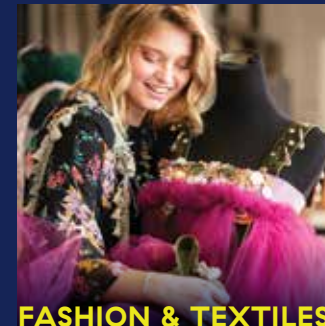
DESIGN

Create designs that can change—and even save—lives. Develop products and bring them to market. And build a workspace to inspire a new workforce.



ENGINEERING

Make green homes greener. Design a water-delivery system that saves lives. And find solutions to global problems before they start.



FASHION & TEXTILES

Merge sustainability and style. Forge connections between technology and textiles. And make what's next unlike anything that's come before.



HEALTH & MEDICINE

Develop healthcare solutions for at-risk communities. Push the patient-centric approach to care. And preserve wellness for generations to come.



NURSING

Build excellent clinical skills through real-world experience. Design, accelerate and implement bold and next-generation solutions to today's healthcare challenges.



SCIENCE

Decrease the spread of global disease. Develop the science that will reshape and improve the world. And reimagine what humankind can accomplish.



SOCIAL SCIENCE

Plan the next content-delivery system. Spot sociological trends that will influence legislation. And ensure that a future driven by A.I. never loses its humanity.

GO

RAMS



student life

ATHLETICS

With 17 men's and women's NCAA Division II teams and state-of-the-art facilities, we play as hard as we work.

MEN'S TEAMS

- BASEBALL
- BASKETBALL
- CROSS COUNTRY
- GOLF
- SOCCER
- TENNIS
- TRACK & FIELD

WOMEN'S TEAMS

- BASKETBALL
- CROSS COUNTRY
- GOLF
- LACROSSE
- ROWING
- SOCCER
- SOFTBALL
- TENNIS
- TRACK & FIELD
- VOLLEYBALL

College is more than an education and a degree.

It's an experience. You'll work hard, and you'll make friends who will be with you forever. You'll hunker down, and you'll let loose.

If there's an activity you enjoy, a cause you're passionate about or a community you need to connect with, chances are there's already a group of Rams ready to welcome you in.

support

ACADEMIC

Gain access to knowledge-based resources at our four libraries which share a common catalog and discovery interface so you can easily find what you are looking for. Get academic support from faculty advisors and peer and professional tutors at the academic success centers.

FITNESS

Enjoy state-of-the-art fitness facilities and classes like spin and yoga to help you reach fitness goals, live a healthier life, and gain a lifetime appreciation for holistic wellness.

WELLNESS

A variety of health and wellness resources make it easy to stay on top of your health. Whether you need counseling, a doctor visit, a place to work out, or spiritual leadership, we are here to help you take care of yourself.

CAREER

The Career Services Centers are ready to help you find internships and job placement opportunities with top companies and organizations in Philadelphia and around the world.

CLUBS & ORGANIZATIONS

- Band/Jazz Band/ Instrumental Group
- Choral Group
- Club and Intramural Sports
- Community Service
- Dance
- Debate
- Environmental Awareness
- Fitness and Well-Being
- Gaming
- Honors
- Leadership and Success
- LGBTQIA+
- Multicultural Awareness
- Professional Program-Specific Clubs
- Radio
- School Spirit
- Social Sororities/ Fraternities
- Spirituality
- Student Government Association
- Theater

around campus

Professional, cultural and recreational opportunities from some of the top destinations on the East Coast are close enough for a day trip:

JERSEY SHORE, NJ	1.5 HOURS
NEW YORK CITY, NY	2 HOURS
BALTIMORE, MD	2 HOURS
WASHINGTON, D.C.	2.5 HOURS
OCEAN CITY, MD	3 HOURS

fast facts

8,300 Total Jefferson Students (3,800 on the East Falls Campus)	96% Job Success and Graduate School Acceptance Rate	160+ Student and Community Organizations	12:1 Student-to-Faculty Ratio on the East Falls Campus
19 Average Class Size on the East Falls Campus	77,000 Alumni	30+ Countries with Study Away and Global Experiences	1,200 Active Research Studies

about philadelphia

6th Most Populous City in the U.S.	13 Home to Headquarters of 13 Fortune 500 Companies	300 Neighborhood Parks, Rec Centers and Playgrounds	Almost 100 Museums
----------------------------------------------	---------------------------------------------------------------	---------------------------------------------------------------	------------------------------



apply

We'd love to get to know you better. Take the next step toward your future and start your application for admission today:

[Jefferson.edu/UndergradApply](https://jefferson.edu/UndergradApply)

visit

The best way to decide where you want to go is to take a closer look at where you're going to be. Join us in-person for a customized visit or explore virtually:

[Jefferson.edu/UndergradVisit](https://jefferson.edu/UndergradVisit)

contact

Undergraduate Admissions

4201 Henry Avenue
Philadelphia, PA 19144
215-951-2800

enroll@jefferson.edu
[Jefferson.edu/Undergrad](https://jefferson.edu/Undergrad)



Thomas Jefferson University

HOME OF SIDNEY KIMMEL MEDICAL COLLEGE

Undergraduate Admissions
215-951-2800 | enroll@jefferson.edu

