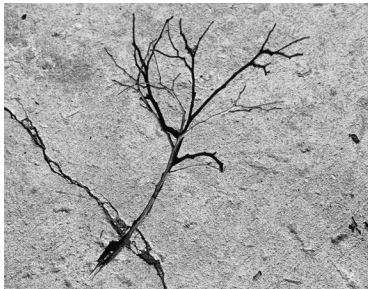




Finding Beauty in the Commonplace

The wonderment and beauty of hidden ecological systems are revealed in non-traditional ways by providing access above, below, and on the ground level.



Overbrook Site Exploration

Visiting the site-during different times of the day to study light conditions, during storm events to see where water collected, and sometimes sitting very patiently to observe the fauna. Photographs and drawings recorded the beauty I had experienced on site.



Hear : • Silence • Wildlife

Smell : • Fragrant flowers, herbs

Touch : • Diverse textures of plants

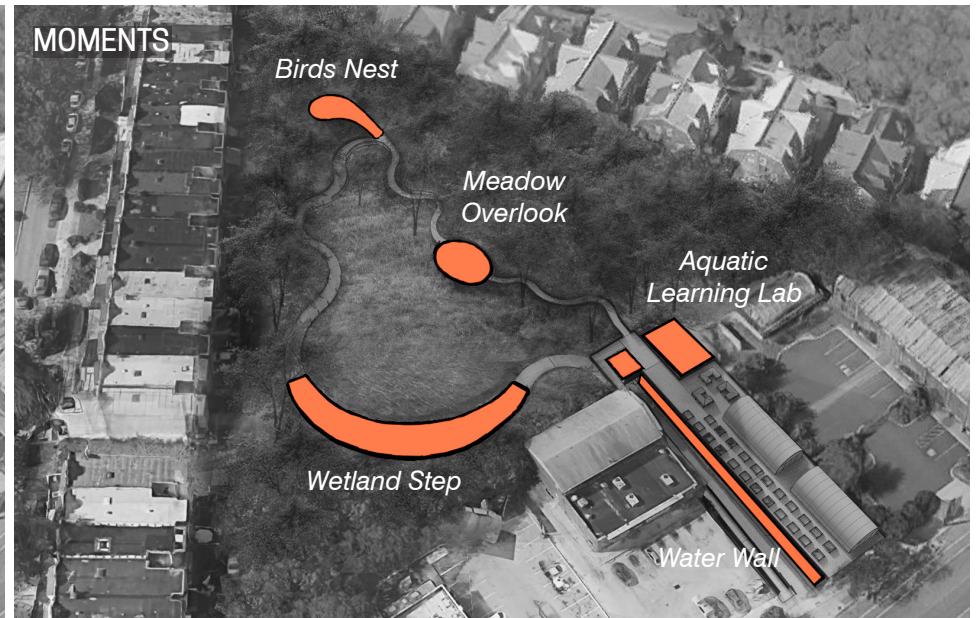
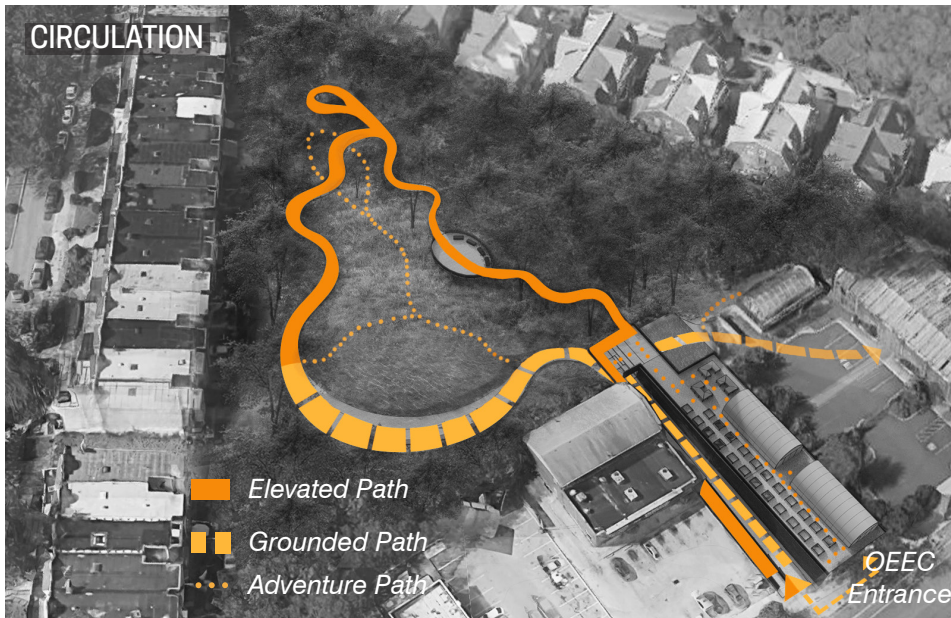
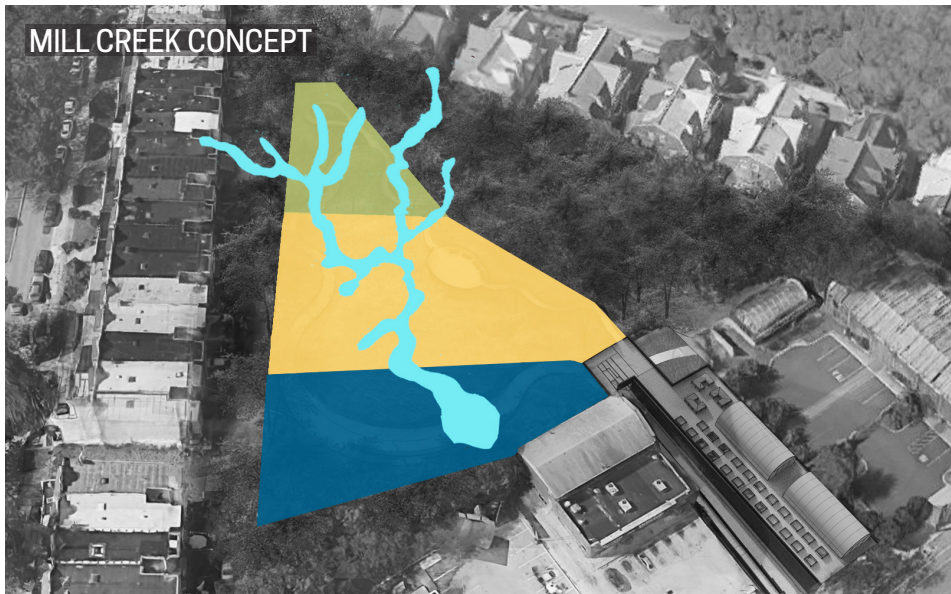
Taste : • Fresh, organic produce

See : • Green spaces • Built areas
to accommodate
wildlife



Overbrook Community Meeting

The community is the expert of their neighborhood and as such, I respected the wisdom of their voices. The goal was to prompt discussion about their vision for the site. Overwhelmingly, the community wanted access to green space.



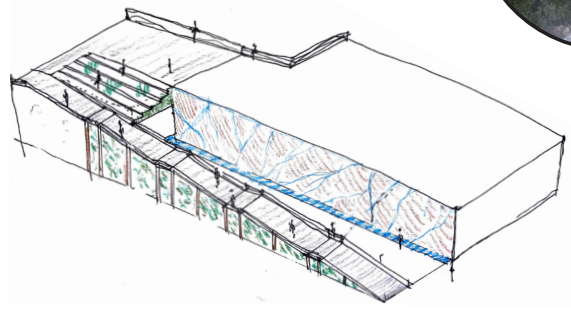
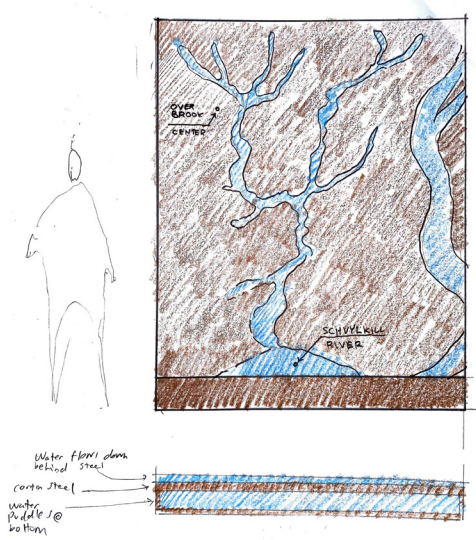
OEEC Design Concept

The concept focuses on something I heard from the community—more access to green space. The design introduces landscape typologies that emulate the landscapes the Mill Creek would traverse from the headwaters to where it connects with the Schuylkill River.



OEEC Rendered Plan

The OEEC becomes an oasis of green space in a dense urban environment, providing opportunities for community and wildlife to co-exist.



"I want to hear sounds of water." **Community Member**

Water Wall Entrance

The water wall serves as an entry point to the OEEC, drawing people off Lancaster Avenue. Water is collected from the roof and falls down the side of the building allowing people to interact with water in a unique way.



*“I want to feel sunshine
and warm breezes.”*

Community Member

Community Rooftop Terrace

The rooftop terrace serves as a multipurpose space where people could meet before experiencing the site, an area for an outdoor classroom, and serves as a starting point for the elevated tree walk.



Bird's Nest

The bird's nest is a space that provides visitors with a unique view of the landscape. The visitor becomes part of the tree canopy, experiencing life above the forest floor.

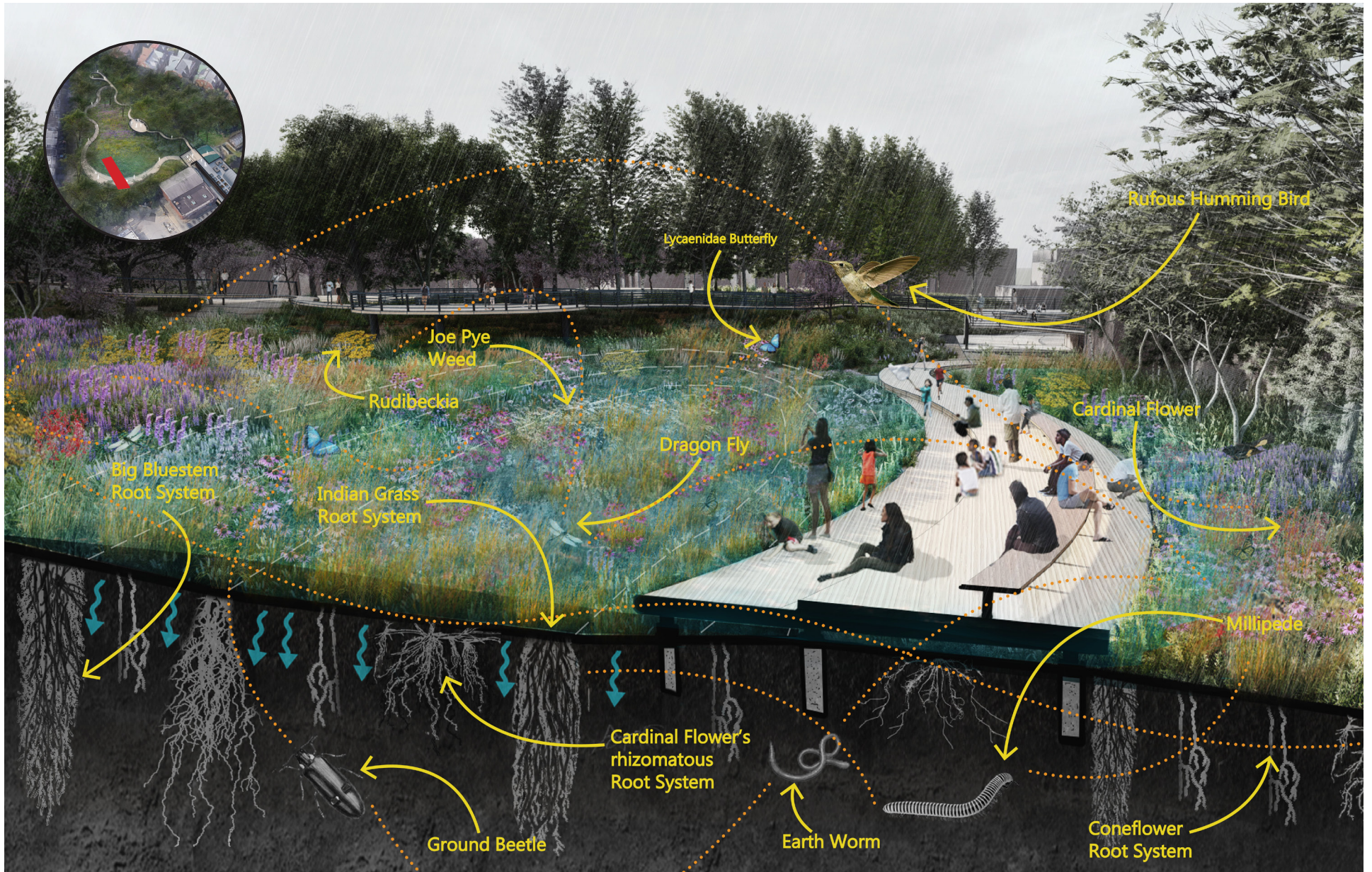


*“I want to smell scents
of flora and fauna.”*

Community Member

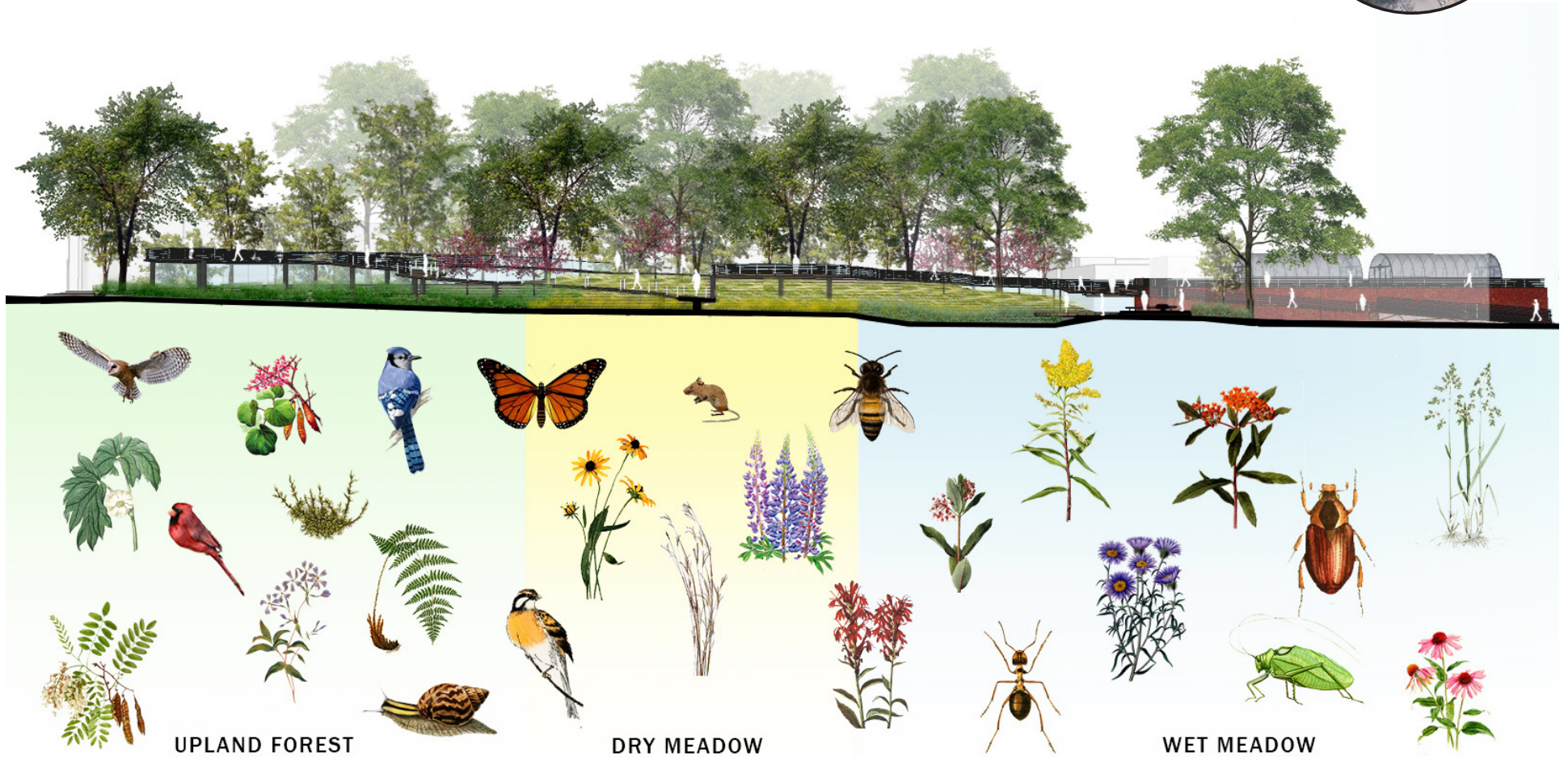
Adventure Path

A less formal way of experiencing the landscape, visitors can experience the lush forest floor teeming with native flora and fauna.



Wetland Step

The meadow is filled with life, changing throughout the seasons providing year-round beauty. The wetland steps allows for visitors to study the large varieties of plants and wildlife inhabiting it.

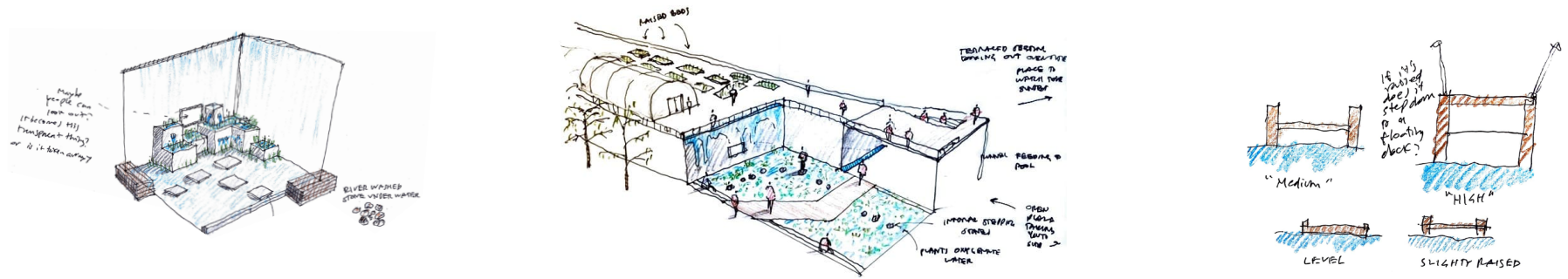


Site Section

The section highlights the three different landscape typologies that are found on site. The elevated walk is shown weaving throughout the site connecting the different areas.



"I want to touch different texture's and see integrated community."
 Community Member



Aquatic Learning Lab

The Aquatic Learning Lab is a sunken area that highlights how plants can improve water quality, becoming a hands-on educational tool.



*“I want to
touch water”*
Community Member

View from Interior Classroom

The window on the side of the building bridges the interior experience with the outside. Classes can observe processes occurring under water while simultaneously looking above.

FINDING BEAUTY IN THE COMMONPLACE PLANTINGS

Upland Forest Plantings

Cercis Canadensis - Eastern Redbud

Mertensia virginica - Virginia Bluebell

Thalictrum thalictroides - Rue-anemone

Phlox divaricata - Woodland Phlox

Polystichum acrostichoides - Christmas Fern

Dennstaedtia punctilobula - Hayscented Fern

Podophyllum peltatum - Mayapple

Robinia pseudoacacia - Black Locust

Meadow Plantings

Schizachyrium scoparium - Little Bluestem

Sorghastrum nutans - Indian Grass

Lupinus perennis - Wild Lupine

Rudbeckia hirta - Black Eyed Susan

Echinacea purpurea - Purple Coneflower

Lobelia cardinalis - Cardinal Flower

Eutrochium purpureum - Joe Pye Weed

Asclepias incarnata - Swamp Milkweed

Monarda didyma - Scarlet Beebalm

Solidago canadensis - Canada Goldenrod

Liatris spicata - Blazing Star