

SUMMIT

CARE CONNECTION AUTONOMY ADVOCACY

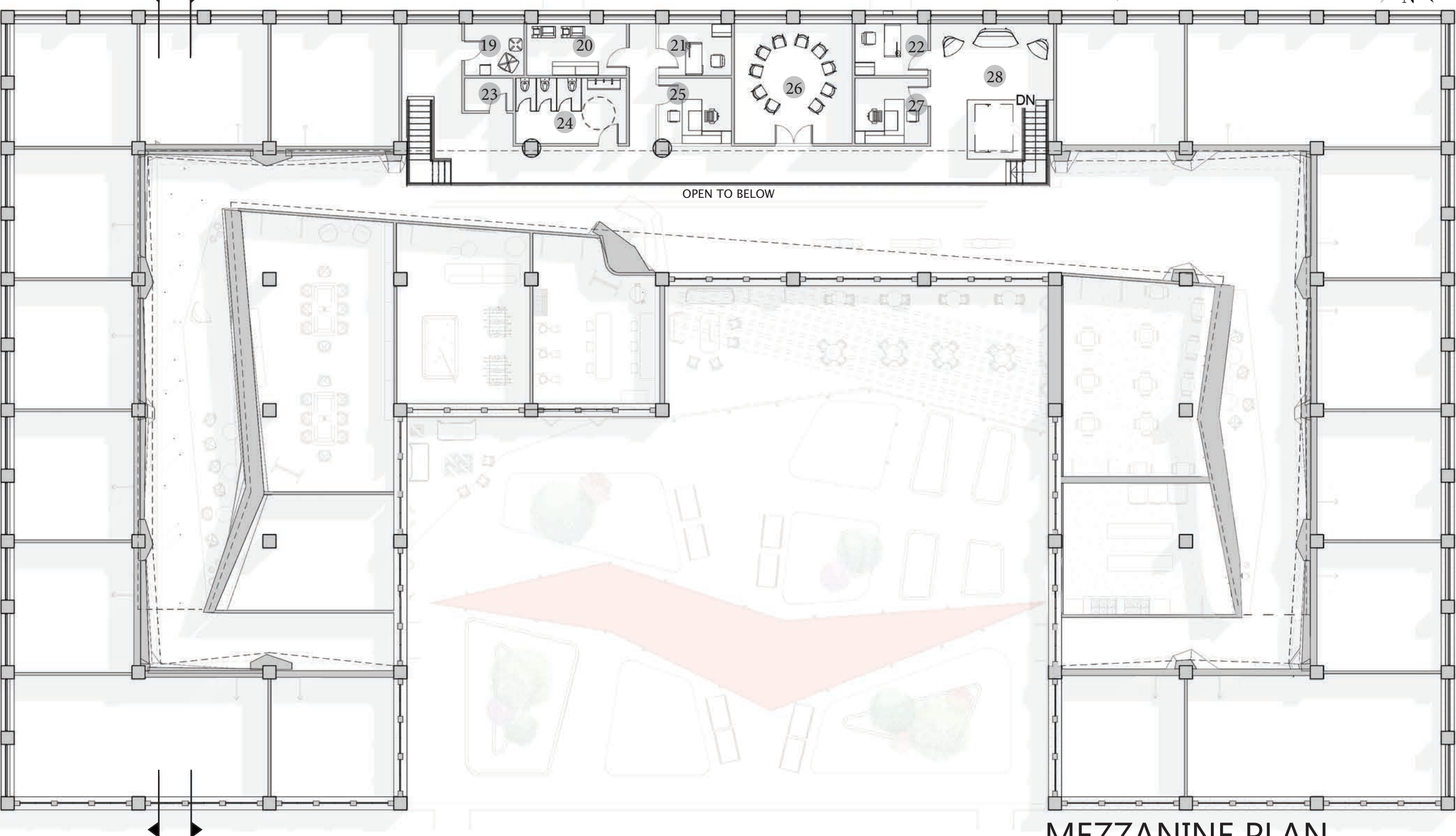
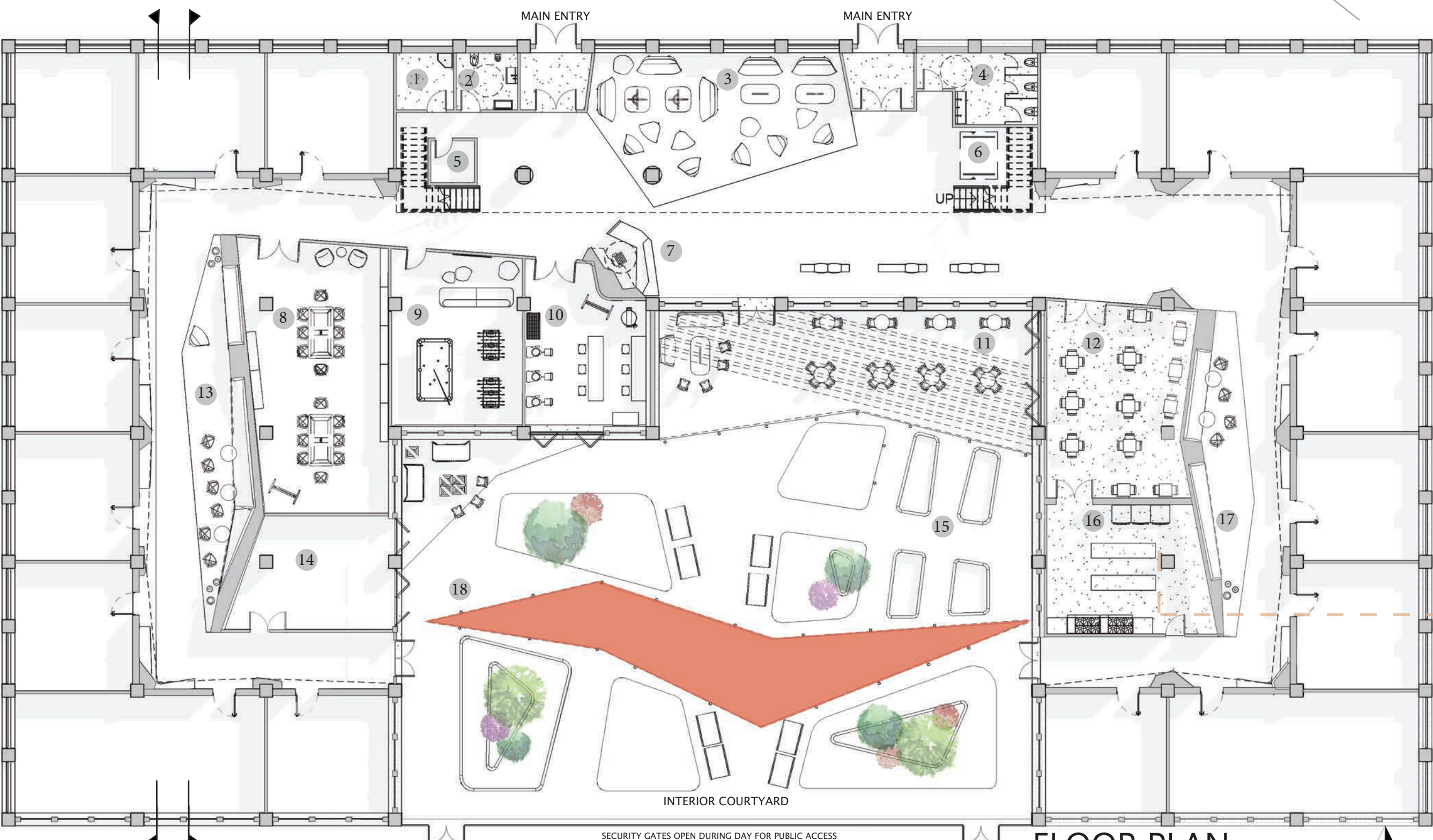


CONCEPT: The Summit represents arrival and personal achievement, a safe vantage point from which to move into the next phase of a journey.

THIS LIVING COMMUNITY SUPPORTS VETERANS RETURNING TO CIVILIAN LIFE AS THEY SEEK TO ACHIEVE WELLNESS AND BUILD MEANINGFUL ROLES WITHIN THEIR COMMUNITIES. THE SPACES AND FACILITY PROGRAMMING ARE DESIGNED TO ENCOURAGE HEALTHY LIVING, SOCIAL CONNECTION, SELF-EMPOWERMENT, SKILL ACQUISITION, AND COMMUNITY ENGAGEMENT AND SUPPORT.



COURTYARD



- 1 Janitor's Closet
- 2 Family Restroom
- 3 Open Lounge
- 4 Gender Neutral Restroom
- 5 Mail Room
- 6 Elevator
- 7 Reception
- 8 Library and Classroom
- 9 Rec Room and Lounge
- 10 Art Studio
- 11 Outdoor Dining Area
- 12 Community Dining Room
- 13 Corridor Alcoves
- 14 Meditation Room
- 15 Community Garden
- 16 Community/Teaching Kitchen
- 17 Corridor Alcoves
- 18 Shaded Walkway
- 19 Lactation Room
- 20 Copy & Filing
- 21 Building Manager's Office
- 22 Administrative Assistant's Office
- 23 Storage
- 24 Gender Neutral Restroom
- 25 Manager of Veteran Support Services' Office
- 26 Flex Space/Group Counseling Room
- 27 Head of Counseling Services' Office
- 28 Waiting Area

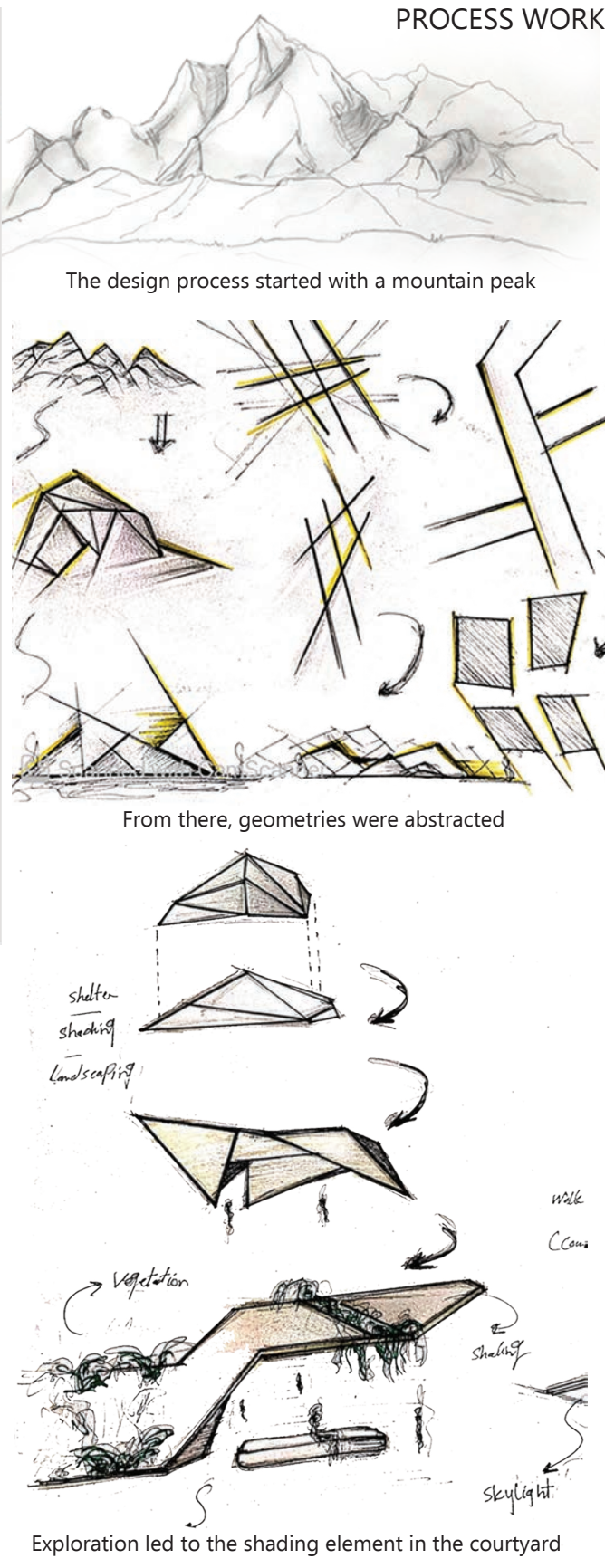
Who Are Our Veterans?

The nation's 18,830,450 veterans make up 7.6 percent of the total population.

Their Gender	Count	Percentage
Male veterans	17,254,563	91.6%
Female veterans	1,575,887	8.3%

How Old They Are	Count	Percentage
65 years and over	9,315,829	49.5%
35 to 54 years	4,470,020	23.7%
55 to 64 years	3,405,348	18.0%
18 to 34 years	1,639,253	8.7%

When They Served	Count	Percentage
Vietnam Era	6,251,257	33.2%
Peacetime	4,338,296	23.0%
Gulf War	4,191,649	22.2%
More than one War	1,682,931	9.0%
Korean War	1,530,875	8.1%
World War II	835,442	4.4%



Design for **social sustainability** means providing opportunities for **CONNECTION** within the program. **Shared common spaces** such as the art studio, library, and rec room lounge support **both structured and casual modes of socialization**. A large communal kitchen does both, offering moveable worktables that can be configured to host cooking classes.

CARE requires vigilance against infection. Integral, impervious, & impregnable materials are used throughout.

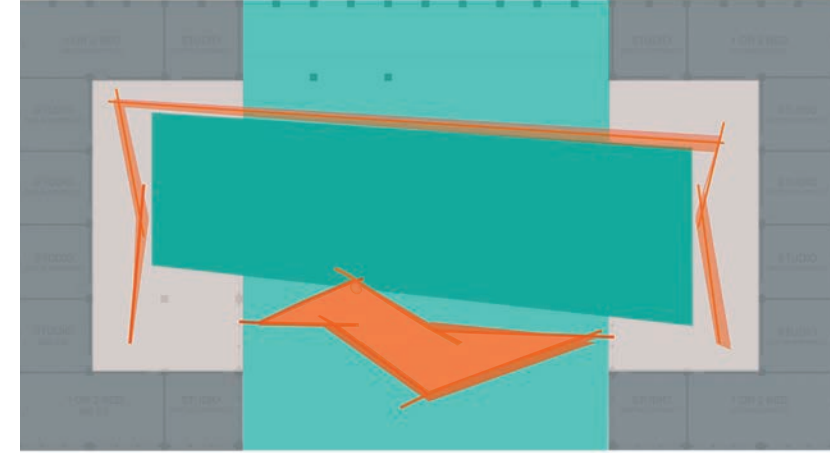
Main traffic areas use heterogeneous vinyl sheet flooring with heat-welded seams to minimize opportunities for germ growth.

Upholstery throughout the space is finished with Crypton, and wall paint uses new Bio-Cote technology.

ADVOCACY is about moving beyond ADA standards and drawing upon **Universal Design principles** to create a physical space that supports all users. Some veterans experience **PTSD**, while others cope with **polytrauma**-a condition that occurs when multiple disabling conditions alongside PTSD occur in combination. Furthermore, some veterans may identify with historically marginalized groups such as **gender non-conforming or transgender** individuals. Therefore, **public restrooms in the space are gender-neutral**. To support **differently-abled users**, built-in benches adjoining residents' apartments are designed according to **ADA specifications**.

CORRIDOR APARTMENT FACADES SECTION-ELEVATION





PARTI DIAGRAM

The Parti transcribes a metaphor: it takes the inspiration of a mountain-top experience and draws it down, materializing it into three-dimensional geometries.



REFERENCES

Belanger, Yi. "Healthcare after COVID-19: Smart Design Solutions for Clinical Spaces." Nelson Worldwide. April 13, 2020. Accessed August 29, 2020. <https://www.nelsonworldwide.com/healthcare-after-covid-19-smart-design-solutions-for-clinical-spaces/>

Browning, W.D., Ryan, C.O., Clancy, J.O. (2014). 14 Patterns of Biophilic Design. New York: Terrapin Bright Green, LLC <https://www.terrapinbrightgreen.com/wp-content/uploads/2014/09/14-Patterns-of-Biophilic-Design-Terrapin-2014p.pdf>

"Common Challenges during Re-Adjustment." U.S. Department of Veterans Affairs. Accessed September 8, 2020. <https://www.mentalhealth.va.gov/communityproviders/docs/readjustment.pdf>

Geer, Valerie. "Designing for Invisible Injuries: An Exploration of Healing Environments for Posttraumatic Stress." AIA, 2016. <https://www.aia.org/pages/22356-designing-for-invisible-injuries-an-exploration?tools=true>

McLane, Yelena, and Jill Pable. "Architectural Design Characteristics, Uses, and Perceptions of Community Spaces in Permanent Supportive Housing." *Journal of Interior Design* 45, no. 1 (2020): 33-52. doi:10.1111/joid.12165.

Moberg, Matilda & Ida Widen. "Integrating Social Sustainability within the design of a building: a case study of five projects at an architectural firm." Master Thesis, Chalmers University of Technology, 2016.

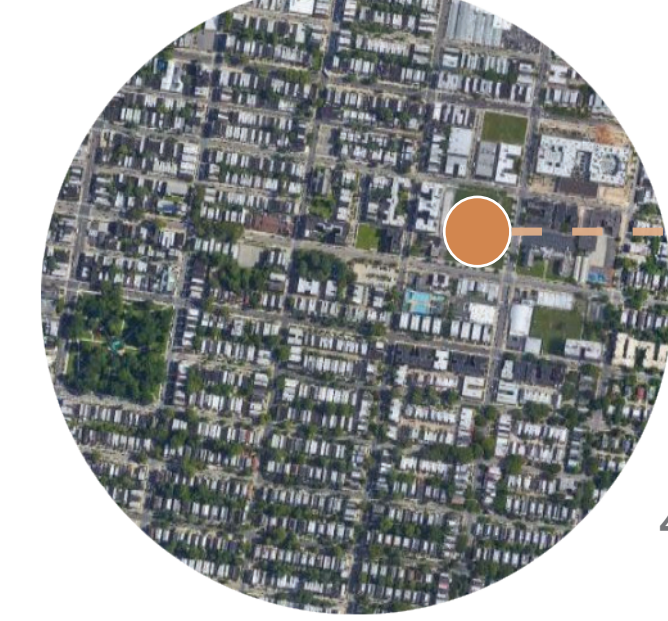
Salazar, Alexandra H. "Designing for calm: How building features impact veterans with PTSD." Texas A&M University Engineering. Accessed August 29, 2020. <https://engineering.tamu.edu/news/2020/08/designing-for-calm-how-building-features-impact-veterans-with-ptsd.html>

Sloane, Mona. "Tuning the Space: Investigating the Making of Atmospheres through Interior Design Practices." *Interiors* 5, no. 3 (2014): 297-314. doi:10.2752/204191114x1412691621184.

COURTYARD

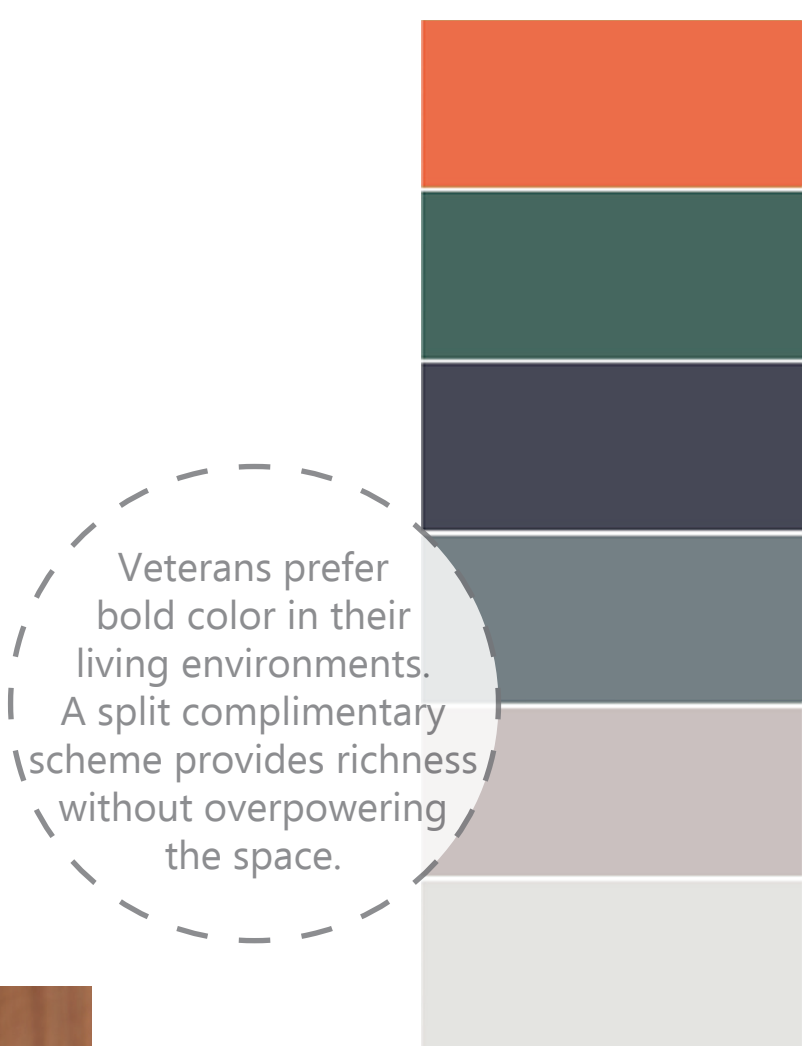
The goal for **CONNECTION** extends beyond the confines of the building and residents within. **Fostering connections with in broader society** is a critical part of combat veterans' readjustment to civilian life. Secured in the evening, **open public spaces** such as the **main entry lounge and courtyard** allow for visitors and guests to mingle with residents in safety and comfort.

"The well connected are more likely to be hired, housed, healthy, and happy"



4800 SPRUCE STREET
PHILA., PA 19139

The site is located in West Philadelphia, USA. A **diverse neighborhood** across all metrics, **amenities** include restaurants, small shops and cafes, grocery stores, and a large public park, the Malcom X. **An ADA-accessible bus route makes a stop one block down from the site**, allowing veterans to take the route east to the **VA Hospital** in the University City area as needed. Alongside **job training** and other skill development, close **proximity to universities can provide educational opportunities** whether on campus or hosted on-site. As a whole, the neighborhood supports the goal of **ADVOCACY**: situating this living community here sets the stage for building strong social ties, professional development, and personal growth.



CORRIDOR



ENTRY AND OPEN LOUNGE

A goal for **AUTONOMY** means **supporting individual needs, preferences, and instincts**. **'Prospect-Refuge' theory** suggests that humans seek out **defensible spaces** in order to feel at ease in a new environment. This principle guides design decisions throughout the space. The residents' corridors include **seating alcoves** on one side of the corridor and **deep thresholds** that materialize out of the abstract geometries of the walls wrapping each apartment entrance. The public **gathering space near the main entrance is situated under the mezzanine floor** above, providing a sense of enclosure from which to look out into the large open hall. Likewise, the dramatic **COR-TEN steel shading structures in the courtyard provide places of refuge** from which to survey the open outdoors.



Furniture selections clockwise from left: Teknion Zones swivel chair; Teknion Fractals high-back settee and ottoman; Teknion Bevy coffee table; Studio TK Dip bench; Hayworth Planes disc base table

A global pandemic is a sobering reminder of how critical it is to design places that protect physical health. In service to **CARE**, space planning provides **extra square footage** in places such as the communal dining area and open lounge spaces. This supports requirements for **physical distancing protocols**. Furniture pieces in these areas are easily movable which allows them to be **reconfigured for safe distancing** while yet supporting socialization.

CORRIDOR ALCOVES SECTION-ELEVATION



Natural ventilation via operable windows in a custom light monitor supports indoor air quality and overall health

Corridor alcoves allow veterans to engage with their neighbors and create meaningful social bonds